

## 5TH STD MODEL EXAMINATION

### SOCIAL SCIENCE

CLASS : V


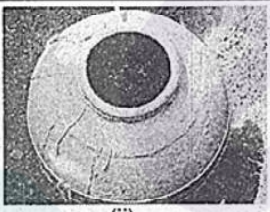
Time : 2 Hrs

#### General Instructions to Candidates:

- 15 minutes is given as cool-off time.
- Read the questions carefully during this time.
- Answer any **SIX** from the given **EIGHT** activities.

#### Activity 1

Complete the Wall magazine given below.

A. The pictures of the historic remains		Name
 (i)		
 (ii)		

- B. What are the two pictures given above related to?
- C. Why should we conserve this type of historic remains?

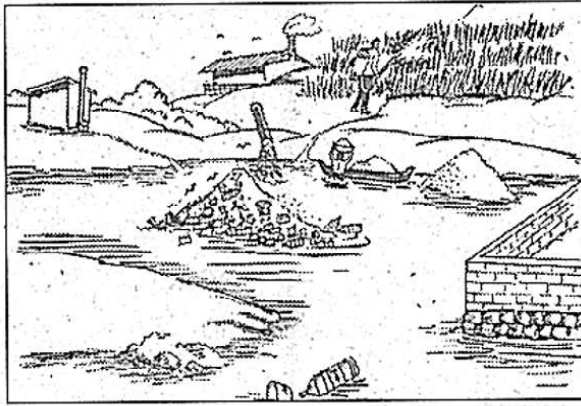
#### Activity 2

There are 44 rivers originating from the Western Ghats and flowing through Kerala.

- A. Which is the longest river in Kerala?

- i) Bharathapuzha      ii) Pamba  
iii) Periyar      iv) Chaliyar

- B. Observe the picture given below. Identify the problems caused to the rivers and suggest remedies.



### Activity 3

- A. According to the physiographic divisions, diverse crops are cultivated in Kerala. Observe the outline of Kerala and write a short note about the crops and its suitable climatic conditions in the highland.



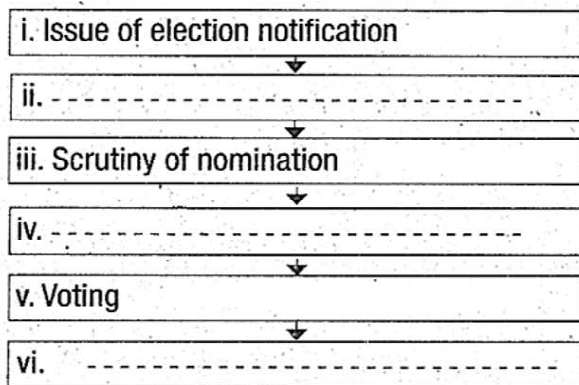
- B. Write any two districts that do not have coastline.

### Activity 4

Election is an inevitable part of democracy. All elections should strictly follow some stages.

- A. Observe the box and complete the flow chart of election process in correct order.

Submission of nomination, Issue of election notification, Voting, Scrutiny of nomination, Counting of votes and Declaration of result, Withdrawal of nomination.



B. Write a short note on the basis of the features of rule of law.

### Activity 5

In the ancient Tamilakam each 'Tina' had its own geographical features. What were the geographical features of the following places mentioned in ancient Tamilakam writings?

Palakkad, Palathara, Marutamkuzhy, Maruthur, Mullakkara.

### Activity 6

The Central and State Governments prepare Annual budget in every financial year.

A. Find out the period of financial year in India from the following.

i) January 1 to December 31

ii) April 1 to March 31

iii) June 1 to May 31

iv) July 1 to June 30

B. Which among the following is the correct statement to ensure economic security of a family?

i) Income and expenditure are the same.

ii) Low income and high expenditure.

iii) High income and low expenditure.

iv) None of the above.

C. All members of the family should practice thrift. As a student, what can you do to ensure thrift? (Write not less than six activities)

### Activity 7

A. Identify the wrong ones among the following statements and correct them.

i) The earth is the centre of the solar system.

ii) The Milkyway is a galaxy which includes the solar system.

iii) The solar system has 9 planets.

B. The Earth is the only planet where life exists. Prepare a note including the various factors needed for the existence of life on the Earth.

### Activity 8

Elucidate the factors that favoured the growth of Magadha.