

Part I

ENGLISH

Maximum Score: 80

Time: 2½ hours

Instructions:

- There is a cool-off time of 15 minutes in addition to the writing time of 2½ hours.
- Use the cool-off time to get familiarised with the questions and to plan your answers.
- Read the questions carefully before answering.
- Certain sections of the questions have choice. Follow the choice regulations.
- When you select a question, all sub questions (if any) must be answered from the same question itself.

(Qns. 1-7) Read the excerpt of the interview with Miss Sandhya Suri, one of the first women who served on an Indian Naval warship, and answer the questions that follow.

Q : *What inspired you to join the Indian Navy?*

A : I've wanted to be in the Armed Forces even before the induction of women came into play. I wanted to be doing something worthy. When the call for the Navy came, I dropped my preparations for the IPS happily.

Q : *What were the challenges you faced at the time?*

A : My greatest challenge in the Navy was to fight to be considered a uniformed military personnel and not a woman. I think this is every woman's challenge in the services.

Q : *What is your view on women Navy officers not being allowed to go on ship?*

A : I would definitely want those doors open. There should be an equal opportunity.

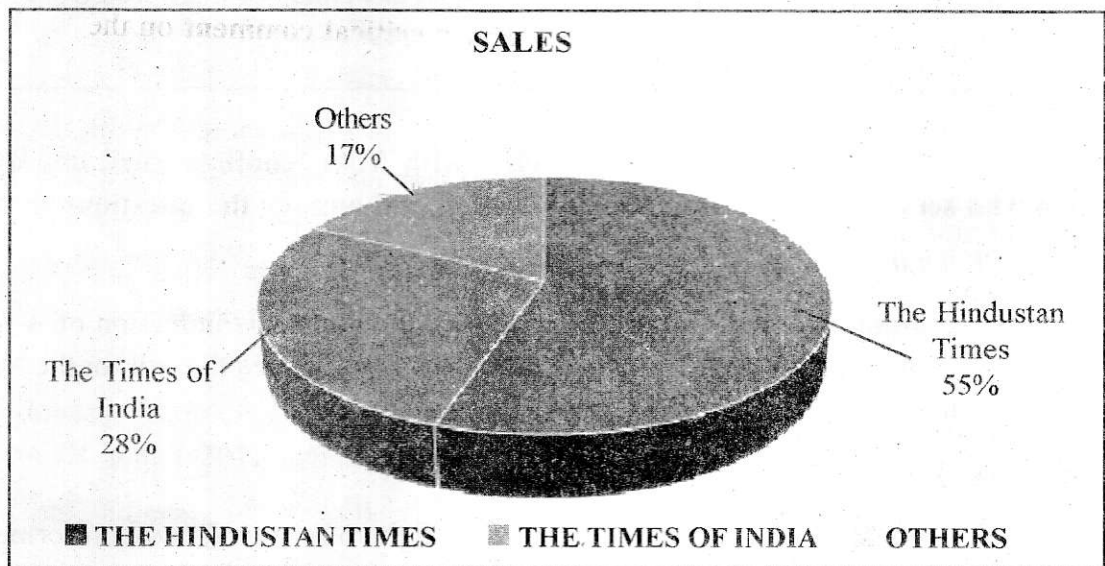
Q : *What is your advice to women wanting to join the Indian Navy?*

A : If you are looking at it as a career and a job, please don't join and undermine our initial efforts of utter pride in serving the nation. Join because the pride of having the privilege swells your heart.

Answer the following questions in a word, a phrase or a sentence.

1. 'My greatest challenge in the Navy was to fight to be considered a uniformed military personnel and not a woman.' What social issue is mentioned here? (1)
2. 'I would definitely want those doors open.' What do the underlined words mean? (1)

3. Pick out the words having the same meaning as 'undermine.' (1)
 reduce / mock / weaken / sideline
4. How does Sandhya Suri view the enrolling of women in the Indian Navy? (1)
5. Suppose you are one of the journalists present during the interview given above. How will you report this? Prepare a brief report of the interview to be published in the daily that you work in. (4)
6. Prepare three more questions to be included for the interview. (3)
7. Miss Sandhya Suri visits your school to deliver an inspirational speech in the assembly. Prepare a short speech to introduce her to the audience. (4)
8. Study the diagram and the paragraph that follows and fill the blanks choosing the correct option. (3)



The Hindustan Times is the (a)..... selling newspaper among those published from Delhi. Its circulation is (b)..... than the combined circulation of (c) other national dailies in English .

- a. (1) least (2) longest (3) smallest (4) largest
- b. (1) less (2) more (3) lesser (4) most
- c. (1) two (2) every (3) all (4) any
9. Boxing is a cruel game. It is not at all a sports event, but an act of arousing the animal instinct of killing. Write three arguments opposing this view. (3)

10. Read the following passage and edit the errors.

(4)

If anyone asks us who *build* Taj Mahal our response will be Shahjahan. This is because we have repeatedly been *tells* by historians that Shahjahan was the builder of the Taj. But surely we all *knew* that the actual building had been *doing* by masons and stone cutters.

11. Nomita's mother is not an empowered woman. Substantiate your views on this statement and write a **paragraph** about Nomita's mother. (4)

(Qns. 12-19) Answer *any six* of the following questions. Each question carries five marks. (6 x 5 = 30)

12. We are the slaves of our customs. Analyse this statement on the basis of the poem 'Mending Wall' in a **paragraph**.

13. A seminar on women empowerment initiatives in Kerala is to be conducted in your school. You are the moderator of the seminar. Prepare a **speech** introducing the paper presenters and the topic.

14. 'Take me not till the children grow.' Write a **critical comment** on the depth of maternal love in the light of your understanding of this line.

15. The poem 'Any Woman' portrays a typical housewife confined in the traditional family structure. So it miserably fails to celebrate womanhood in the right sense. Do you agree with this argument? Note down your views in a **paragraph**.

16. Suppose you are preparing the script of a play based on the short story 'Matchbox.' The director asks to you write a self-introduction for the central character Nomita at the beginning of the play. Prepare such a **monologue**.

You may begin like this: *Hello, I am Nomita...*

17. You, as a T.V. journalist, are assigned to report the fight between the Amigo Brothers at Tompkins Square Park. Prepare a **live report** describing the preparations and the electrifying atmosphere just before the commencement of the fight.

18. 'To be fair-minded is really difficult'. Write a **paragraph** on this statement in the context of the one-act play, 'The Hour of Truth.'

19. Imagine that you are a leading publisher and you would like to publish a collection of stories by Ashapura Debi. Prepare a **blurb** for the book, 'The Matchbox and other Stories.'

(Qns. 20-23) Answer *any three* of the following. Each question carries seven marks.

(3x7=21)

20. Horegallu in Sudha Murty's story stands for a source of solace and peace of mind in the modern era of stress and isolation. Do we have such horegallus now? Don't you think that such horegallus are essential in life? Prepare a **speech** to be delivered on Souhruda Day on the importance of sharing.

21. Christine Lagarde says, "We need to provide greater access to credit so that women can achieve greater economic independence." In the light of this statement prepare a **write-up** on the Kudumbasree project in Kerala and its impact on women empowerment.
22. Read the poem given below and write a **critical review** of it:

Depth of a Woman

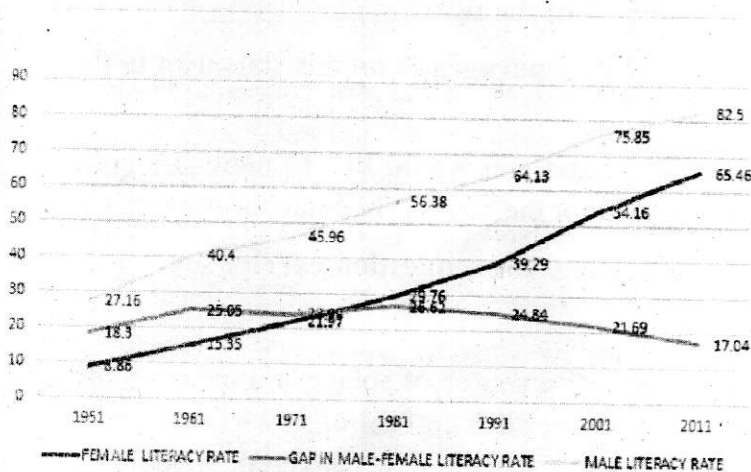
- Courtney Kane

There is depth in me that is
 Much like the sea
 And on days of my greatest gleam
 I am the woman who manages
 What some may say is the impossible.
 A son, a daughter, I have them all
 And nothing prevents me from
 Keeping them calm, in great winds,

In the roughest rain,
 The sight of my eyes, the searing pain
 Of life's hard road,
 It all builds to a glorious strength,

The strength of the women before me,
 It is the depth of a worldly woman.

23. The following graph and box show the gaps in male and female literacy rates in India between 1951 and 2011 census years and the factors responsible for them. Use the information to write an **article** in about 150 words for your school magazine.



Factors responsible for poor Female Literacy Rate

- Gender based inequality
- Social discrimination and economic exploitation
- Occupation of girl child in domestic work
- Low enrolment of girls in schools
- Low retention and high drop-out rate

* # # # *